

BIN-X system

presented by

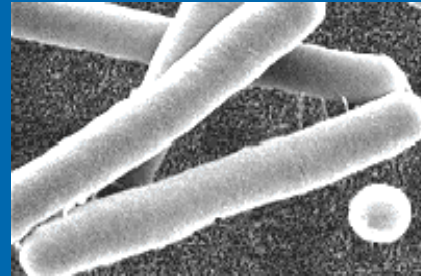
Nile Water Systems

“the clean water people”



Overview

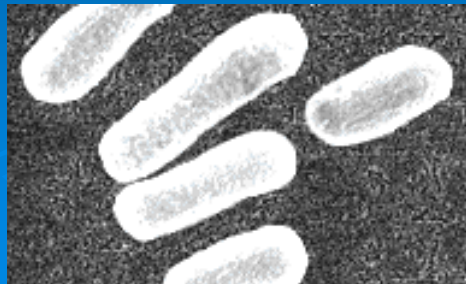
- The BIN-X system is a tap water Ultrafiltration system used for cold and hot water.
- The secret in our system is the patented UF-membrane with a pore size of only 0,03 μm .
- The timer controls the automatic flush function of the membrane. In this way we secure against bacterial "bomb" and at the same time keep the membrane clean.
- High security - low need for service.



BACILLUS SUBTILIS



ESCHERICHIA COLI



SHIGELLA SONNEI



PSEUDOMONAS AERUGINOSA

Characteristics and benefit

- Total rejections of particles and bacteria.
- Reduction of virus 99,99%.
- Changes and reduction of calcium structure, reduction of corrosions and biofilms.



Characteristics and benefit

- ◆ Self-cleaning function makes service practically unnecessary.
- ◆ Long lifetime of membranes.
- ◆ BIN-X system is VA-approved - also in combination with the use of active carbon filters.

Applications for BIN-X systems

- Postmixers soft drinks
- Water coolers
- Ice cube machines
- Dental units
- Food and beverages
- Showers - hospitals



Applications for BIN-X systems


- Private homes
- Apartment Buildings
- Nursery homes
- Hospitals
- Public buildings
- Industrial process water
- Coolers and cooling towers



Test results


The water- and systems quality in all Bin-X membrane systems are tested and certified regularly by estimated laboratories and official institutions.

Test results are available on request.



STEINS

Steins Laboratorium A/S
 Ladelundvej 85
 DK-6650 Brørup
 Denmark
 Telephone +45 76 60 40 00
 Telefax +45 76 60 40 22
 Internet: www.steins.dk
 E-mail: info@steins.dk
 A/S reg.no. 108633
 Brørup, 01.12.2003
 Page 1 of 1
 Journal no.: B203-79485-01



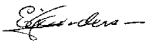
DANAK
reg. no. 222

REPORT OF ANALYSIS

Product: 6570
 Date of reception: 26.11.2003
 Testperiod: 26.11.2003 - 01.12.2003

Marking: Nile Clean water membrane system - UF 4

Analysis	Result	Method	Std.Dev.	Accuracy
60239 Total coliform	<1 /100ml	DS 2255		25
61018 E.coli	<1 /100ml	DS 2255		25
60857 Count at 22°C	<1 /ml	DS/INF 6222:1999		25
60858 Count at 37°C	<1 /ml	DS/INF 6222:1999		25
60951 Enterococci	<1 /100 ml	ISO/DIS 7899-2		23
60243	<1 /50 ml	DS 2256		25



Ejvind Andersen

This report applies for the tested subject(s). The report must not be rendered, except in full, without a written approval from Steins Laboratorium A/S.
 For any queries regarding degree of accuracy on microbiological analyses, please contact Steins Laboratorium A/S
 *) =Not included by DANAK reg. no. 222. Tel. +45 76 60 40 00 Dairy & Food, Hølstebro

Specifications



Technical data	UF 24 C	UF 45 C	UF 410 C
Membrane area (m2)	0.50	2.20	4.50
Capacity (l/h)**	150	660	1,350
Recovery (%)	99.5		
Max. Water pressure (bar)	6		
Min. Water pressure (bar)	0.5		
Max. Water temp. (°C)	40		
Reduction bacteria %	99.99999		
Reduction virus % *	99.9		
Dim. (H x W x D) (cm)	63 x 9 x 9	85 x 18 x 18	135 x 18 x 18
Connections: Feed – drain – clean water	1/2" - 1/2" - 1/2"	3/4" - 3/4" - 3/4"	
Power supply (earthed)	230 V AC / 50 Hz / 5 Watt		
Weight (empty) (kg)	1.5	4	7

* Expected values ** At 1 bar diff. pressure
We reserve the rights for changes

sales Africa & Middle East



Nile Water Systems

P.O. Box 33, Hill Parking, 84513 El Gouna (Red Sea), Egypt

mail: water@nilecorporation.com, web: www.nilecorporation.com

Phone & fax: phone + fax: (002) 065 3 580 280

sales Turkey

Nile Water Systems

mail: nilewater@hotmail.com, web: www.nilecorporation.com

Phone: (0090242)5112018 Fax: (0090242) 5112083